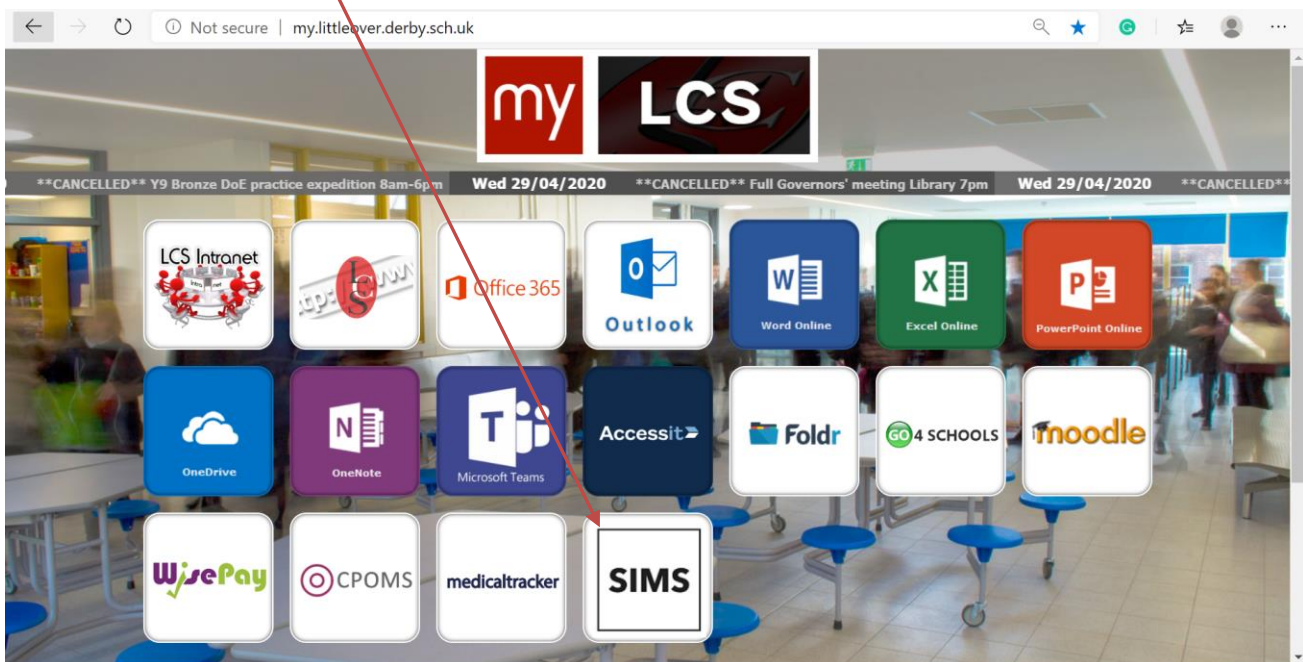


# Accessing SIMS

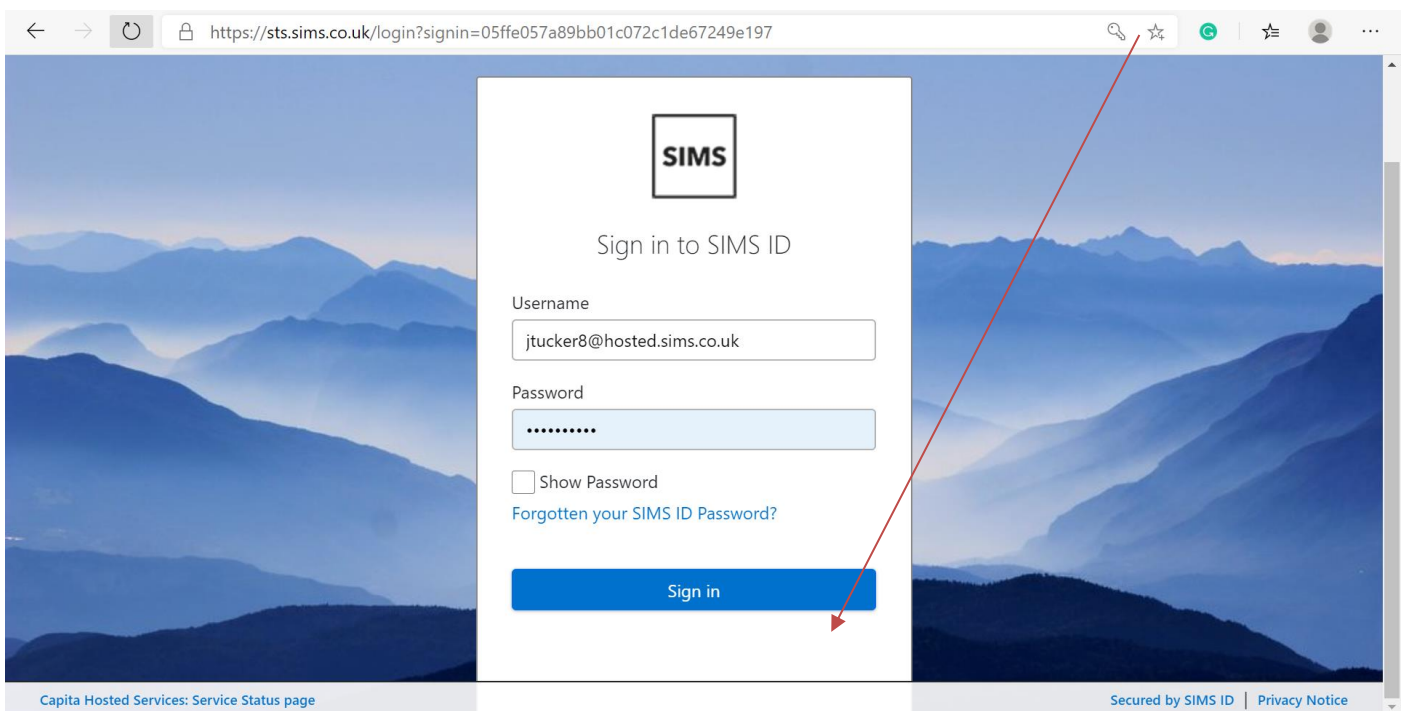
## Instructions

### Accessing SIMS

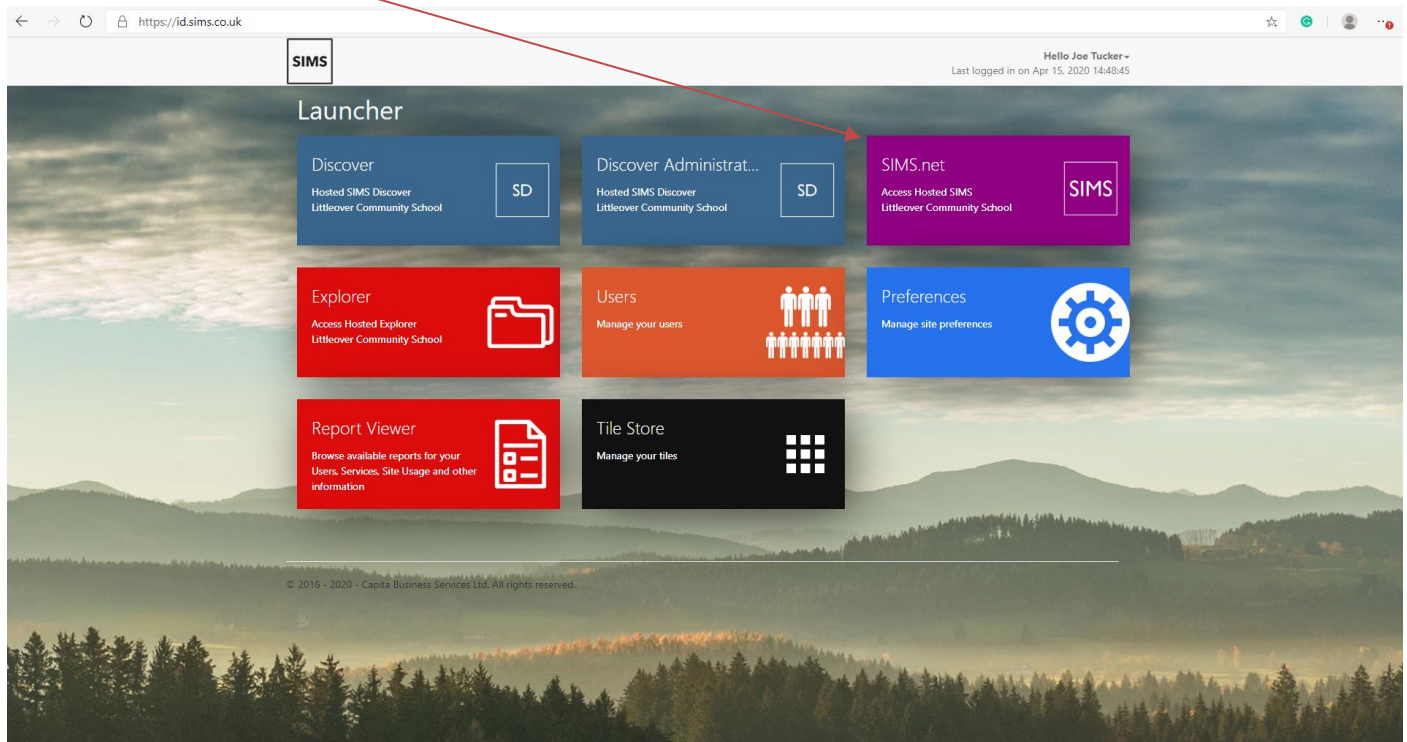
You can access "SIMS" by going to **my.littleover.derby.sch.uk** through either Google Chrome or Internet Explorer after doing this click on the SIMS tile.



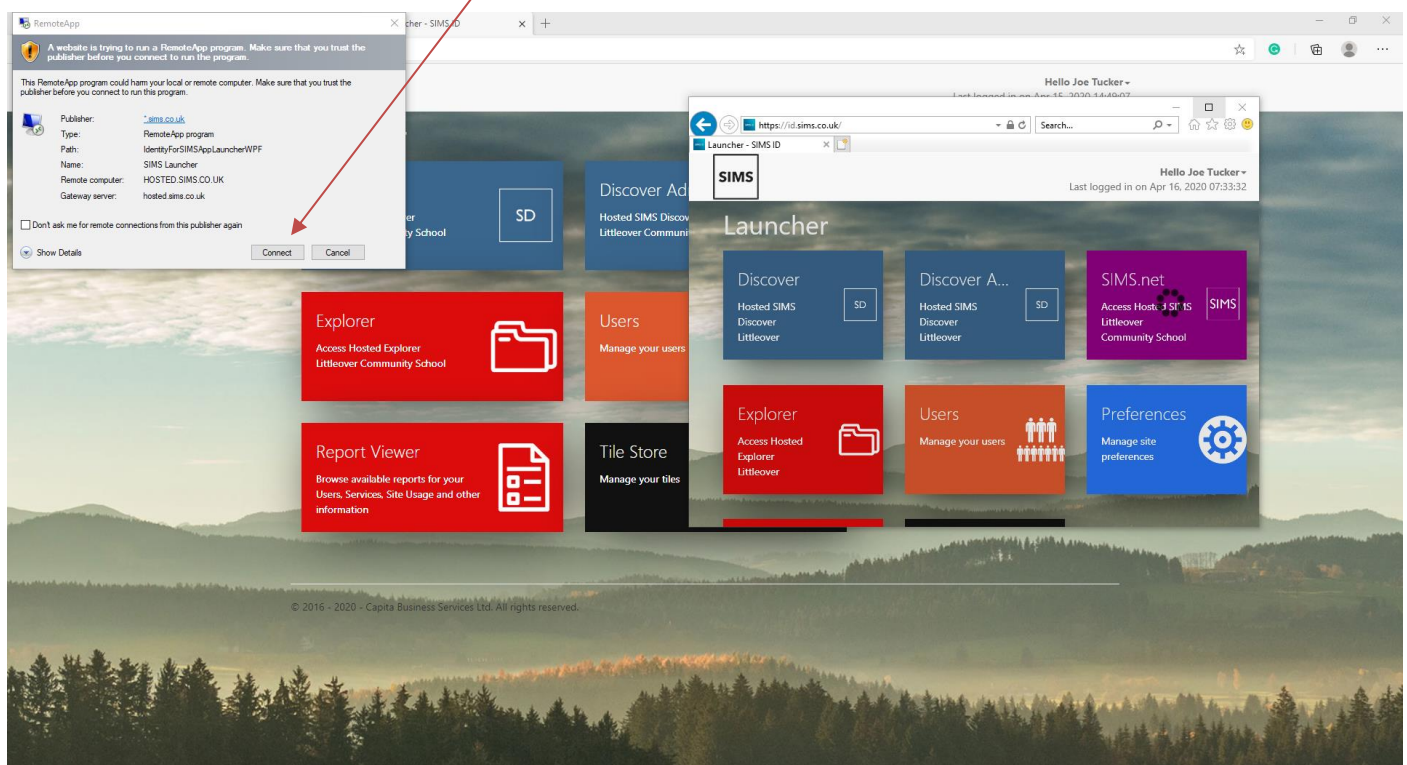
Once the page loads you will need to enter your **SIMS Username** and **SIMS Password** and click **Sign in**.



After you have signed in to SIMS you will be taken to the SIMS Launcher page. To access Hosted SIMS click on the purple tile called **SIMS.net**.



If you are using Internet Explorer click **Connect**. You will now have launched SIMS.

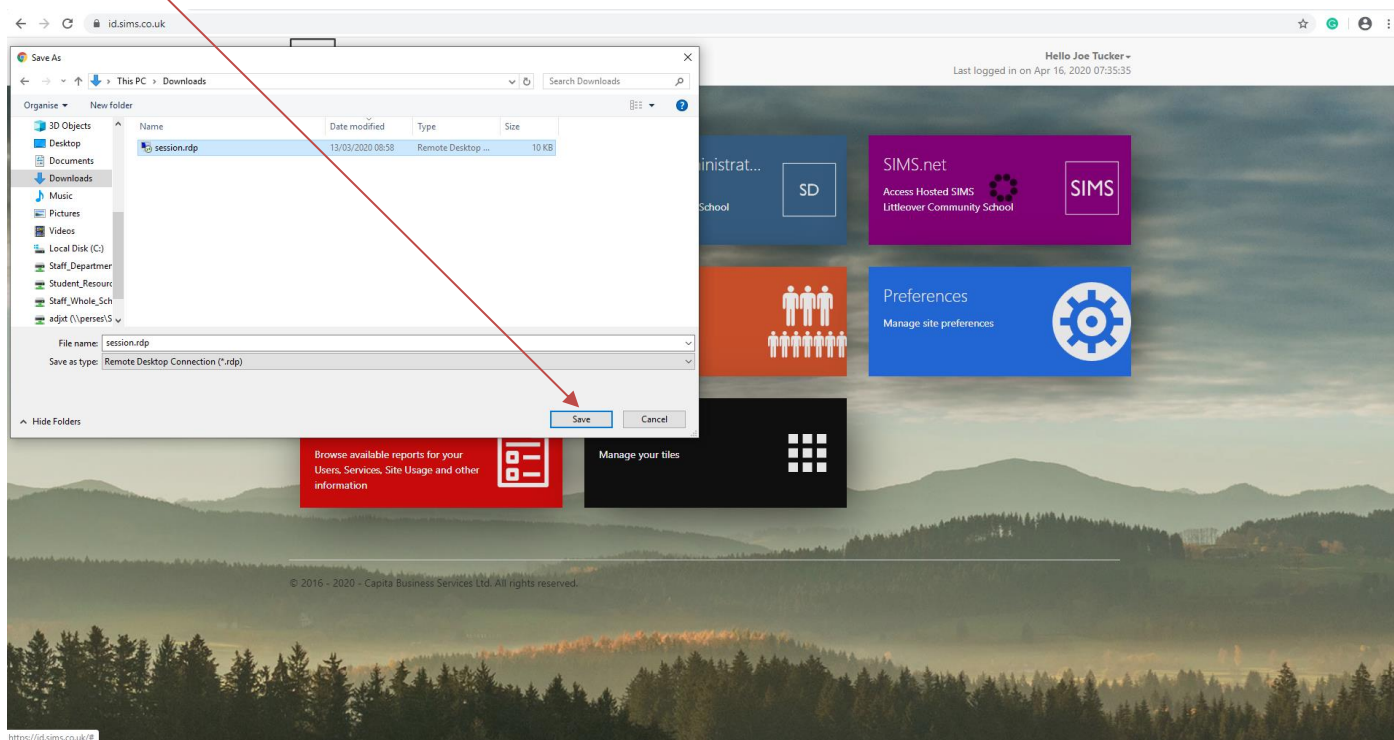




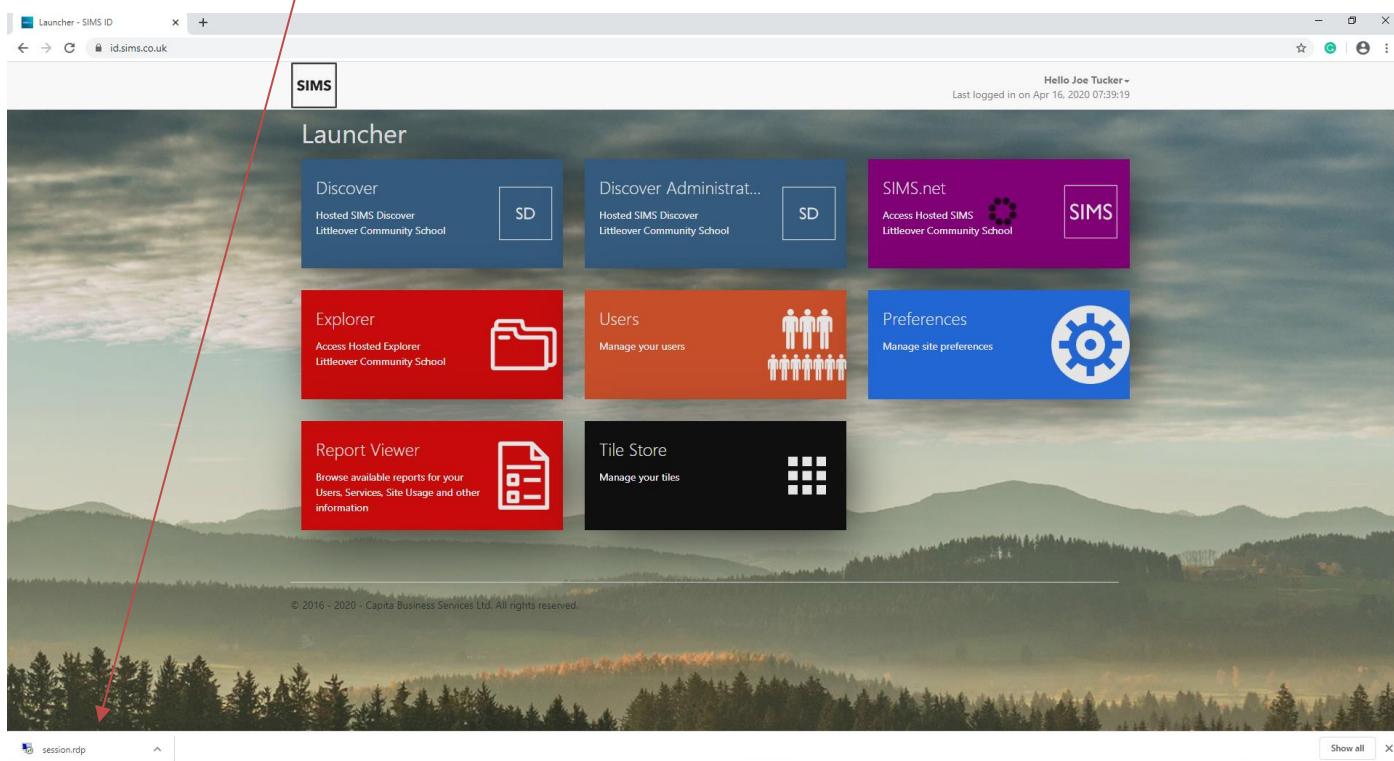
## Accessing SIMS via Goggle Chrome

Follow the previous steps to go into the portal and click on the launcher.

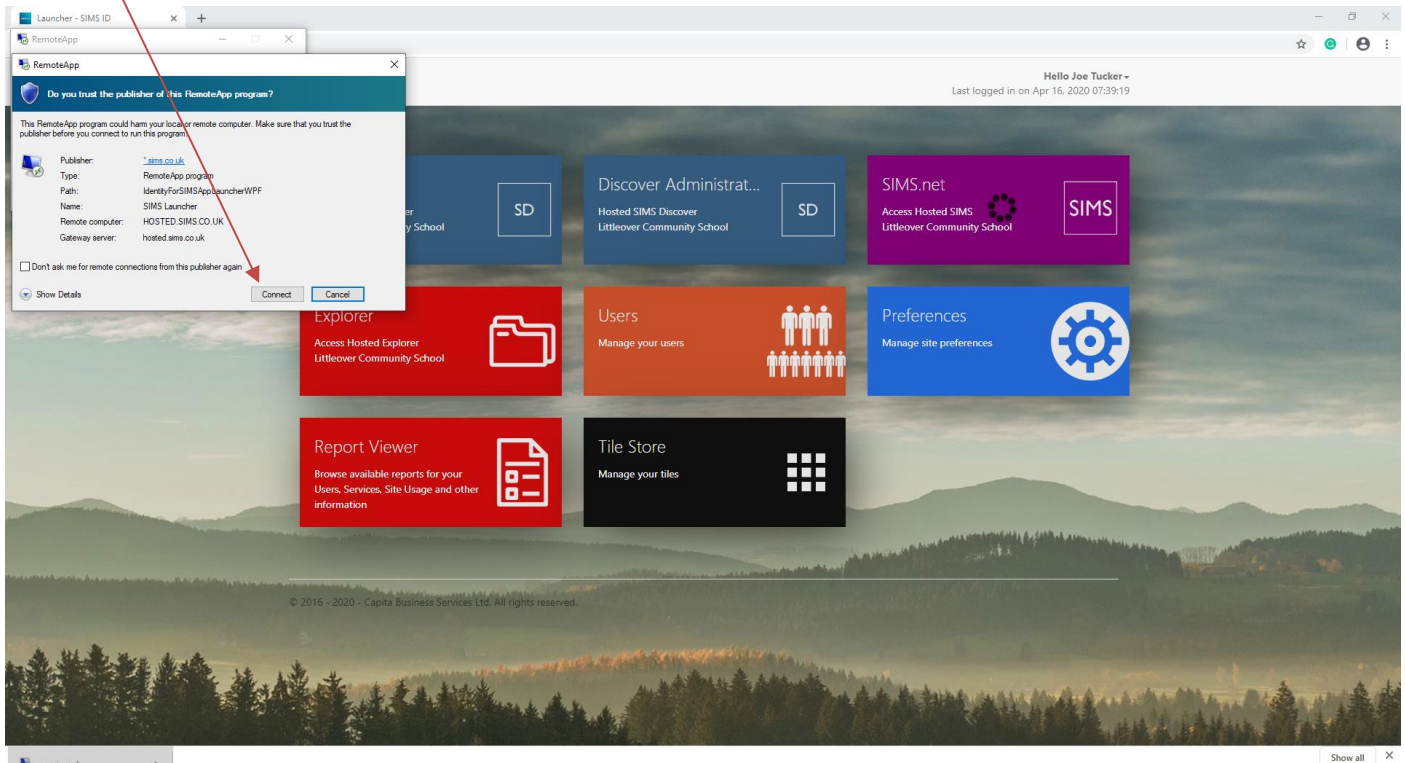
Save the **session.rdp** file after you have clicked on the SIMS.net tile.



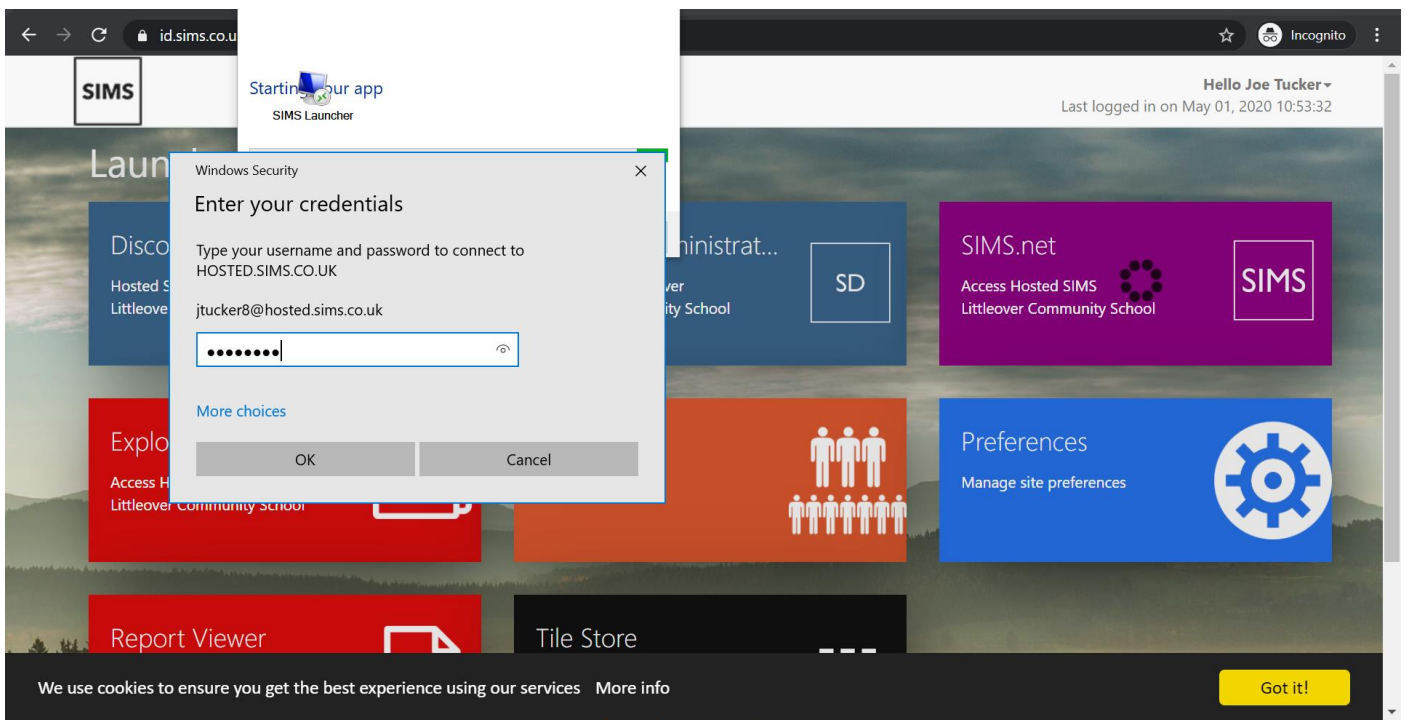
Run the downloaded **session.rdp** file.



Click **connect**.



Enter your **Hosted SIMS** user name and password (the same one you logged on to the portal with).



You should now have accessed SIMS via Google Chrome.